

fergusson's winery, dixon's creek

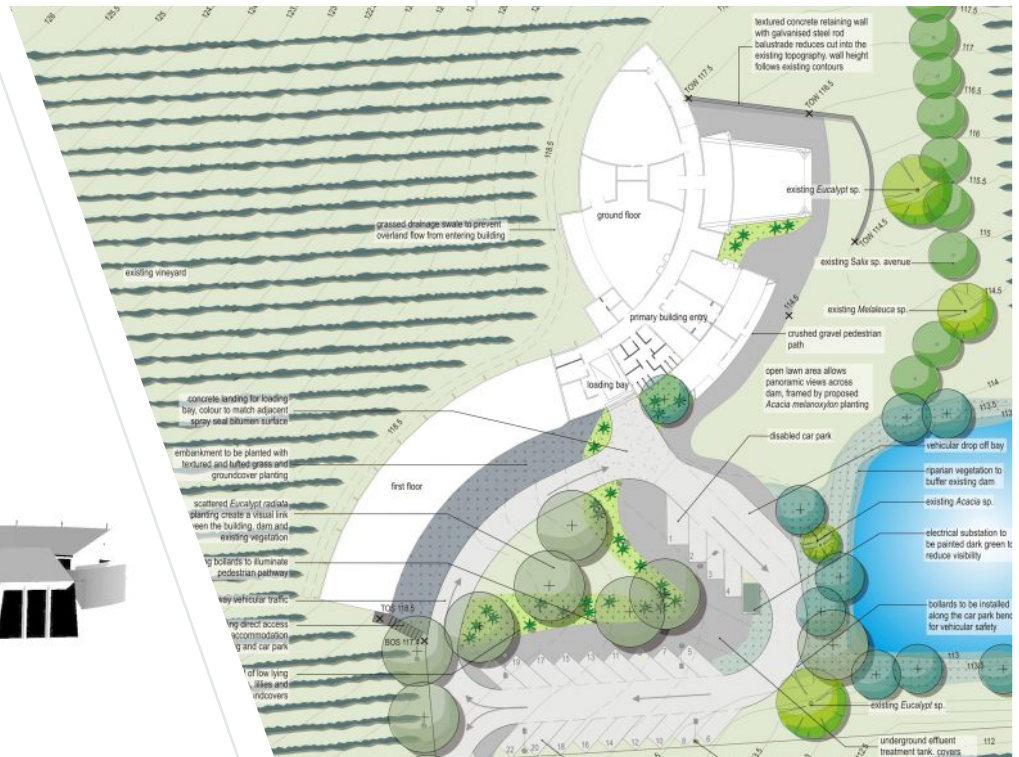
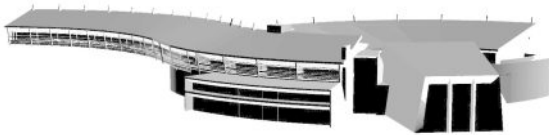


Client:

Techcor Developments

Project team

Hansen Partnership
Artima Design Architects



Fergusson's Winery, Dixon's Creek

Hansen Partnership was engaged by Techcor Developments in early 2005 to prepare a landscape design and 3D visualisation for a new conference centre encompassing a restaurant and accommodation facilities.

A detailed physical and visual analysis of the site was undertaken to ensure that the development was sited sensitively and was in keeping with local landscape character.

Hansen Partnership worked collaboratively with the architects, Artima design to develop the forms, materiality and function of the building. Using 3D modelling techniques and an intimate knowledge of the site, the building design was developed to be totally integrated with the site topography and surrounding landscape character.

The final building and landscape design presents a series of weaving forms that respect the existing slope and settle easily within the existing vineyard.

By proposing an upgrade to the existing dam facilities we aimed to create a series of stormwater treatment techniques that would further reinforce the development's harmony within the rural site.



urban planning urban design landscape architecture

hansen partnership pty ltd
melbourne | sydney | vietnam
level 8 136 exhibition st
melbourne vic 3000
t 61 3 9654 8844 f 61 3 9654 8088
e info@hansen-online.com.au
w hansen-online.com.au